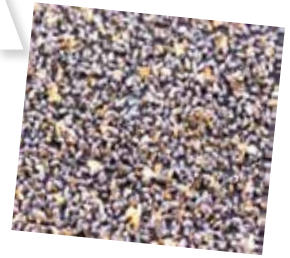


TRICHOGRAMMA CHILONIS

Sustainal
ECO FARM

KMB
KEN MICROBES BIOTECH

Trichogramma chilonis /
japonicum
≥2500 wasps/card
Opt Temp: 15°C-35°C



WHAT IS TRICHOGRAMMA CHILONIS?

Trichogramma chilonis is a parasitic wasp known for its efficiency in managing lepidopteran pests, such as stem borers and armyworms.

Adult size: ~0.3 mm, with pale yellow coloration and distinctive red eyes.

Parasitic behavior: Female wasps lay eggs inside pest eggs, parasitizing up to 10 pest eggs per day. Larvae consume the host embryo, preventing pest emergence.

Lifecycle: Rapid development, completing a generation in as little as 7-9 days under favorable conditions, ensuring control faster than pest proliferation.

PRODUCT SPEC

Product Name: *Trichogramma chilonis*

Specification: ≥2500 wasps/card

Optimal Temperature: 15°C-35°C

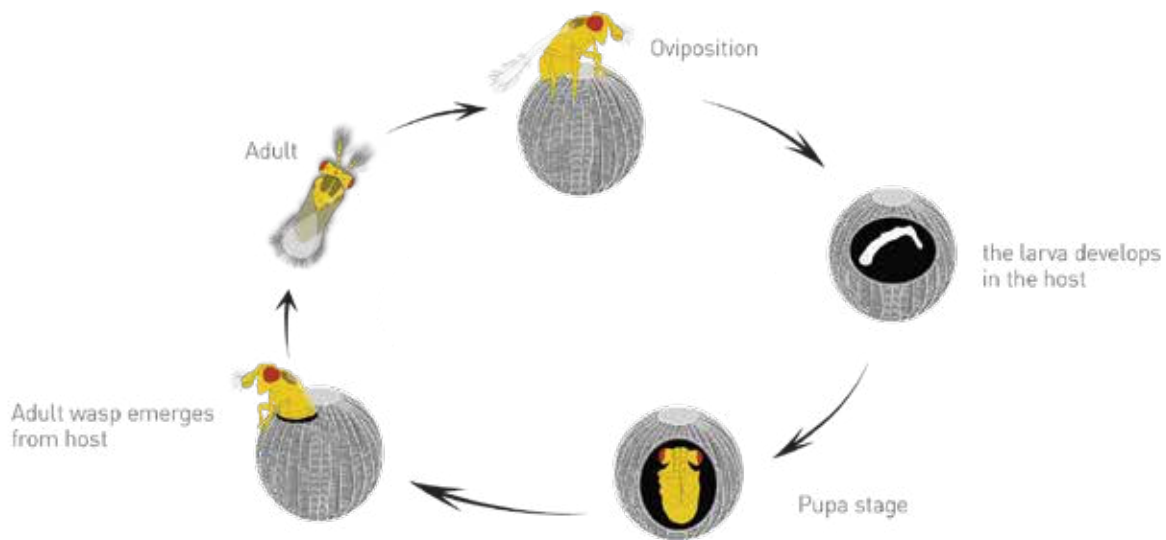


Diagram of *Trichogramma chilonis*.

KMB
KEN MICROBES BIOTECH

Sustainal
ECO FARM

Tel: +603-3123 1500 | Email: kenmicrobes@gmail.com | <https://kenmicrobes.com>

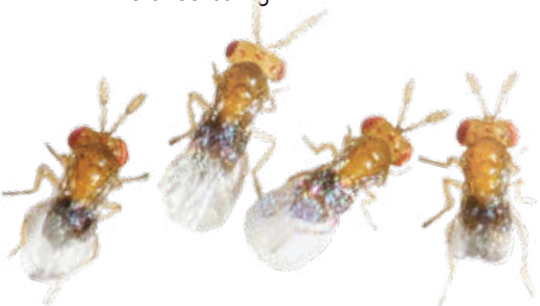


STORAGE

- Store *Trichogramma chilonis* in its original packaging at 4°C - 8°C (39°F - 46°F) to ensure viability.
- Keep bottles horizontal in a cool, dark environment.
- Use within 7 - 14 days of receipt for optimal performance.

Handling Guidelines:

- *Trichogramma Chilonis* is shipped in insulated, chilled containers. Maintain packaging integrity until release.
- Evenly release *Trichogramma Chilonis* across the field, ensuring contact with foliage. Avoid dropping on the ground or exposure to direct sunlight.



TARGETS



Rice Stem Borers



Army Worms

...and other fruit borers.



USAGE INSTRUCTIONS

• PEST MONITORING METHOD

Release when adult pests are detected.

Use insect pheromone traps and monitoring devices. Once adult pests are observed in the traps, release *Trichogramma* wasps.

• TRICHOGRAMMA EGG CARDS

It is recommended to hang 18-30 *Trichogramma* egg cards per acre. Based on pest infestation levels, release again after 7-10 days. Releasing twice in succession is more effective.

• NO PESTICIDE

Avoid pesticide use immediately before or after releasing *Tricho chilonis*.