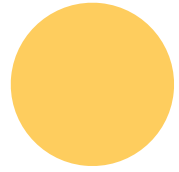


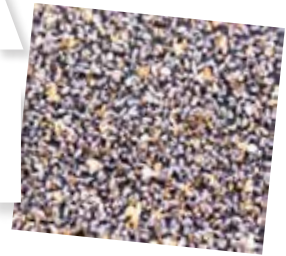
TRICHOGRAMMA JAPONICUM

Sustainal
ECO FARM

KMB
KEN MICROBES BIOTECH



Trichogramma chilonis / japonicum
≥2500 wasps/card
Opt Temp: 15°C-35°C



WHAT IS TRICHOGRAMMA JAPONICUM?

Trichogramma japonicum is a parasitic wasp renowned for its effectiveness in controlling lepidopteran pests, particularly those affecting rice and vegetable crops.

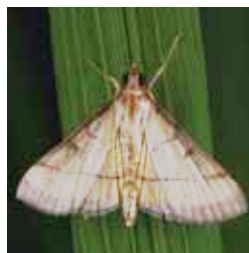
- **Adult size:** ~0.3 mm, with pale yellow coloration and red eyes.
- **Parasitic behavior:** Female wasps lay eggs inside pest eggs, parasitizing up to 10 pest eggs daily.
- **Larvae activity:** The larvae destroy the host embryo, preventing the pest from hatching.
- **Lifecycle:** Completes a generation in 7-9 days under suitable conditions, providing rapid pest control and population suppression.

TARGETS

Highly effective against the eggs of lepidopteran pests, including:



Rice Stem Borers
(*Scirpophaga incertulas*,
Chilo suppressalis)



Rice Leaf Folders
(*Cnaphalocrocis medinalis*)



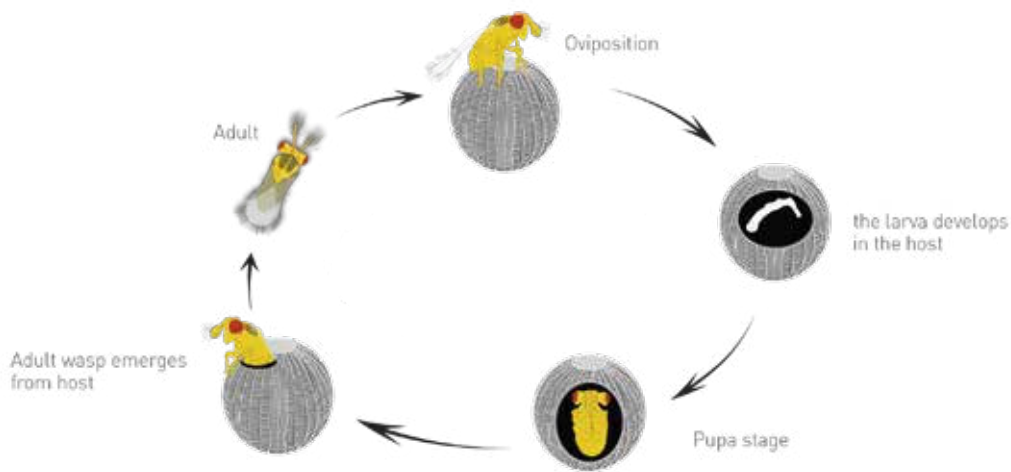
Diamondback Moths
(*Plutella xylostella*)

...and other moth species affecting rice and vegetables.

KMB
KEN MICROBES BIOTECH

Sustainal
ECO FARM

Tel: +603-3123 1500 | Email: kenmicrobes@gmail.com | <https://kenmicrobes.com>



STORAGE

- Store *Trichogramma japonicum* in its original packaging at 4°C - 8°C (39°F - 46°F) for best results.
- Keep the packaging horizontal in a cool, dark environment.
- Use within 7 days of receipt to maintain wasp viability.

Handling Guidelines:

- Distribute *Trichogramma japonicum* evenly across the field by hanging cards on plant foliage.
- Avoid placing cards on the ground or exposing them to direct sunlight.
- Maintain proper hygiene during handling to ensure the viability of the wasps.



PRODUCT SPEC

Product Name: *Trichogramma japonicum*
 Specification: ≥2500 wasps/card
 Optimal Temperature: 15°C-35°C



USAGE INSTRUCTIONS

• PEST MONITORING METHOD

Timing of Release: Release when adult pests are detected in the field.

- Use pheromone traps or light traps to monitor adult pest activity. Begin release once pest activity is observed.

• TRICHOGRAMMA EGG CARDS

- Hang 18-30 *Trichogramma* egg cards per acre for effective control.
- Conduct subsequent releases after 7-10 days based on pest infestation levels. Releasing twice in succession enhances efficacy.

• NO PESTICIDE

Avoid the use of pesticides immediately before or after releasing *Trichogramma japonicum*