

# LACEWING



## WHAT IS A LACEWING?

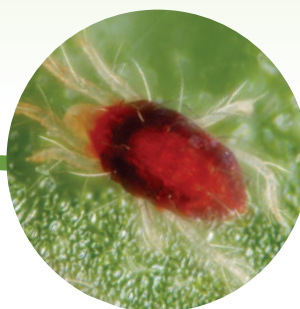
*Chrysoperla carnea* is a widely recognized beneficial insect for biological pest control, renowned for its voracious predation of soft-bodied insect pests. This natural predator is highly effective in managing various pests in agricultural and horticultural crops.

### TARGETS

MEALYBUGS



SPIDER  
MITES



APHIDS

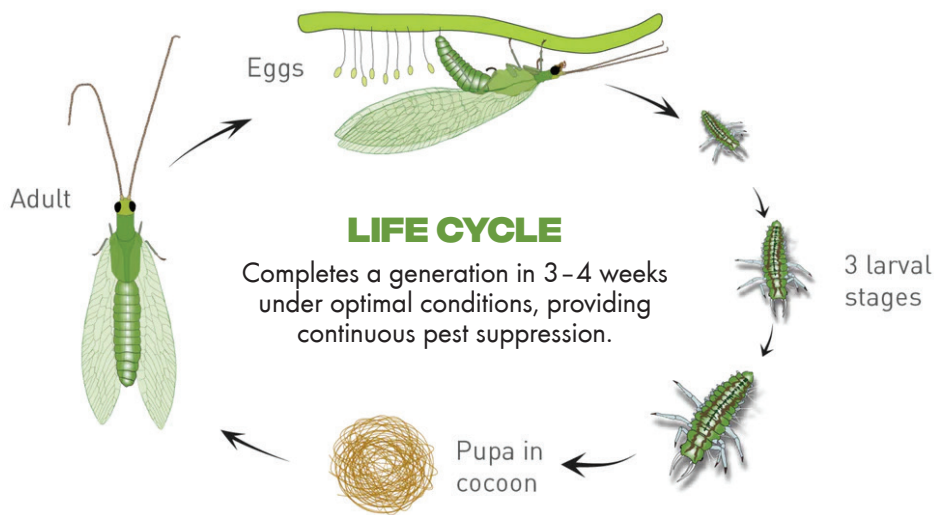


THRIPS



WHITEFLIES

...and other soft-bodied insect pests.



## LARVAE ACTIVITY

Known as "aphid lions," the larvae consume aphids, thrips, whiteflies, and other small pests at a rate of up to 60 pests per day.

## ADULT SIZE

~12-20 mm in length, with delicate green bodies and large, transparent wings.

## PREDATION RANGE

Effective across a broad range of crops, including vegetables, fruits, and ornamentals.



### ORIENTATION

Keep containers upright to maintain larval viability.



### TEMPERATURE

Store *Chrysoperla carnea* larvae in their original container at 8°C-10°C (46°F-50°F).



### USAGE WINDOW

Use within 28 hours of receipt to maximize predation efficiency.

## APPLICATION AND HANDLING

### • TIMING OF RELEASE

Release when pest populations are detected at an early stage.

### • RELEASE RATES

- Apply 2,000-5,000 lacewing egg per hectare for moderate pest infestations.
- For severe infestations, increase release rates proportionally.

### • FREQUENCY OF RELEASE

Conduct releases at weekly intervals or as pest populations demand.

#### Handling Guidelines:

- Distribute lacewing egg evenly across the affected areas by gently sprinkling them onto foliage or applying them in small, shaded clusters.
- Avoid exposure to direct sunlight or excessive heat during release to ensure viability.
- Ensure no chemical pesticides are applied 3-5 days before and after release.

## PRODUCT SPECIFICATION

Egg card: Strips of 500, 1000 egg

Adult bottle: 50/100 per bottles

