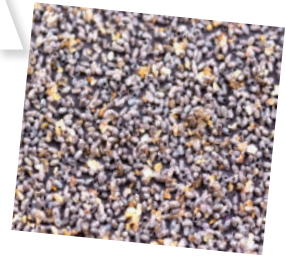


# TRICHOGRAMMA CHILONIS

Sustainal  
ECO FARM

KMB  
KEN MICROBES BIOTECH

Trichogramma chilonis /  
japonicum  
≥2500 wasps/card  
Opt Temp: 15°C–35°C



## WHAT IS TRICHOGRAMMA CHILONIS?

*Trichogramma chilonis* is a parasitic wasp known for its efficiency in managing lepidopteran pests, such as stem borers and armyworms.

**Adult size:** ~0.3 mm, with pale yellow coloration and distinctive red eyes.

**Parasitic behavior:** Female wasps lay eggs inside pest eggs, parasitizing up to 10 pest eggs per day. Larvae consume the host embryo, preventing pest emergence.

**Lifecycle:** Rapid development, completing a generation in as little as 7–9 days under favorable conditions, ensuring control faster than pest proliferation.

### PRODUCT SPEC

Product Name: *Trichogramma chilonis*

Specification: ≥2500 wasps/card

Optimal Temperature: 15°C–35°C

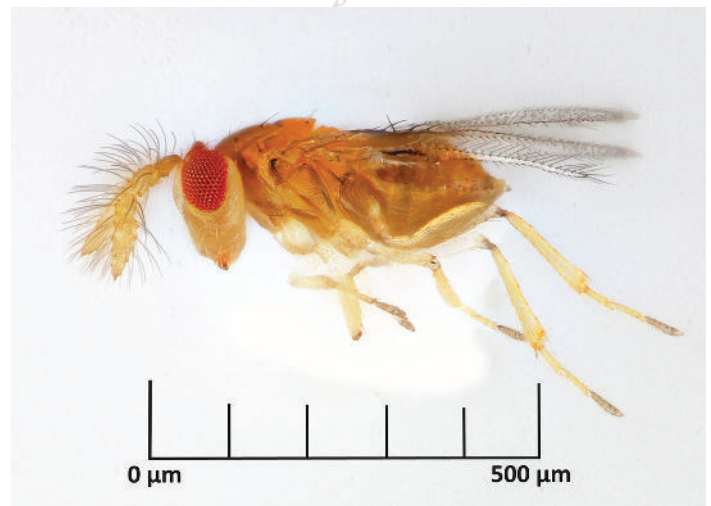
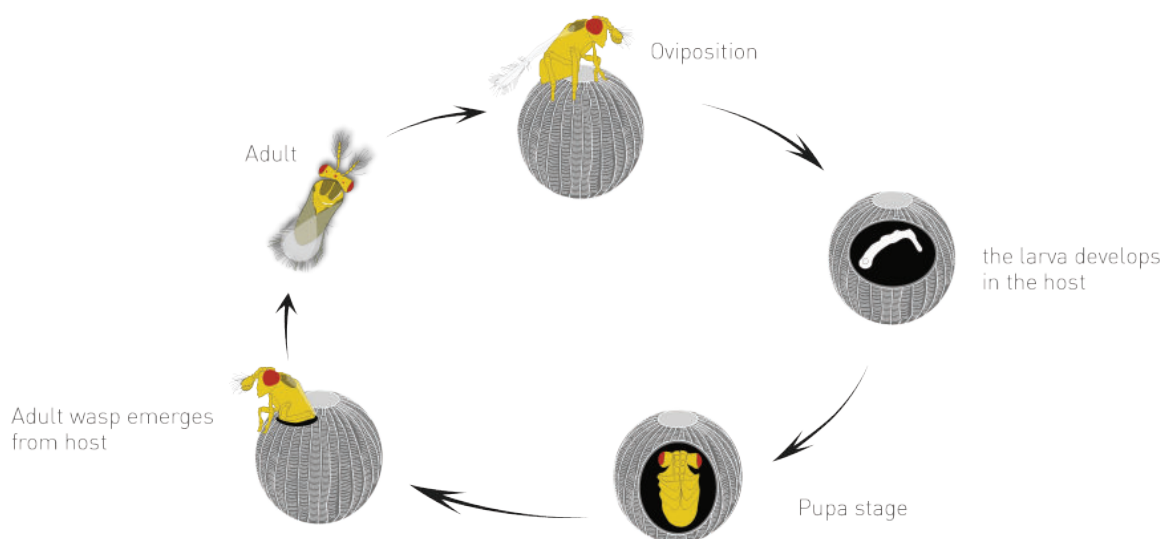


Diagram of *Trichogramma chilonis*.

KMB  
KEN MICROBES BIOTECH

Sustainal  
ECO FARM

Tel: +603-3123 1500 | Email: [kenmicrobes@gmail.com](mailto:kenmicrobes@gmail.com) | <https://kenmicrobes.com>



## STORAGE

- Store *Trichogramma chilonis* in its original packaging at 4°C – 8°C (39°F – 46°F) to ensure viability.
- Keep bottles horizontal in a cool, dark environment.
- Use within 7–14 days of receipt for optimal performance.

### Handling Guidelines:

- *Trichogramma Chilonis* is shipped in insulated, chilled containers. Maintain packaging integrity until release.
- Evenly release *Trichogramma Chilonis* across the field, ensuring contact with foliage. Avoid dropping on the ground or exposure to direct sunlight.



## TARGETS



Rice Stem Borers



Army Worms

...and other fruit borers.



## USAGE INSTRUCTIONS

### • PEST MONITORING METHOD

Release when adult pests are detected.

Use insect pheromone traps and monitoring devices. Once adult pests are observed in the traps, release *Trichogramma* wasps.

### • TRICHOGRAMMA EGG CARDS

It is recommended to hang 18–30 *Trichogramma* egg cards per acre. Based on pest infestation levels, release again after 7–10 days. Releasing twice in succession is more effective.

### • NO PESTICIDE

Avoid pesticide use immediately before or after releasing *Tricho chilonis*.

